

The **scape** gallery

Arni Magnusson

November 23, 2020

Contents

| | | |
|----------|------------------|-----------|
| 1 | Overview | 2 |
| 2 | plotB | 3 |
| 3 | plotCA | 4 |
| 4 | plotCL | 7 |
| 5 | plotIndex | 9 |
| 6 | plotLA | 11 |
| 7 | plotN | 12 |
| 8 | plotSel | 15 |

scape, n. *A view of scenery of any kind, whether consisting of land, water, cloud, or anything else.*

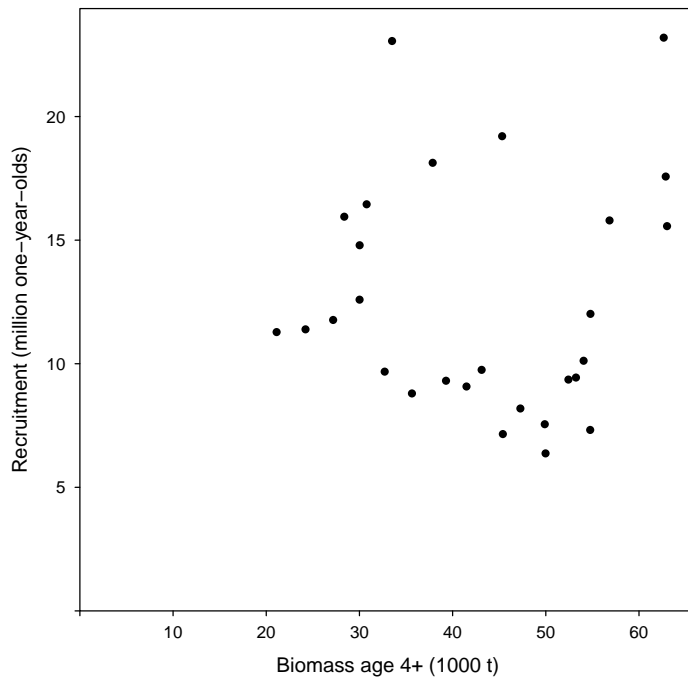
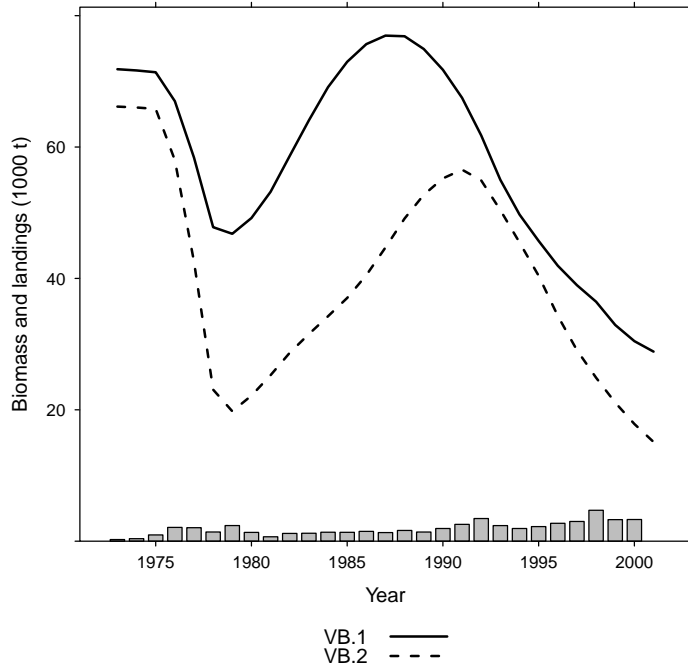
—Oxford English Dictionary

1 Overview

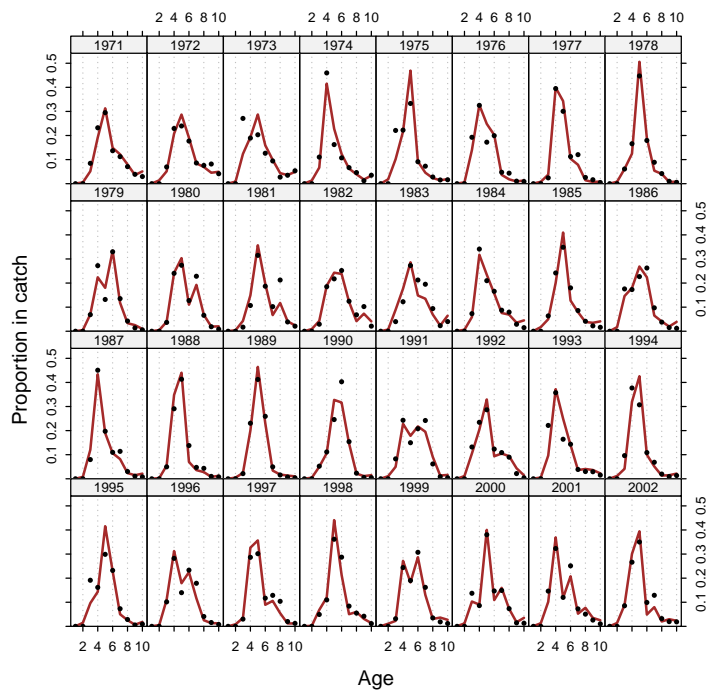
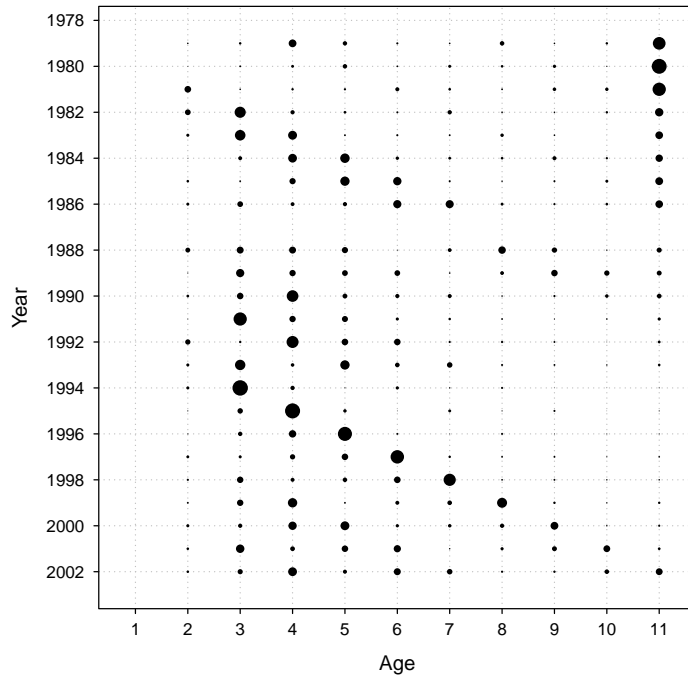
This vignette is only a series of plots, demonstrating how the **scape** plot examples look in a PDF document, as opposed to the default graphics device. Useful for package maintenance and as a visual overview of the package.

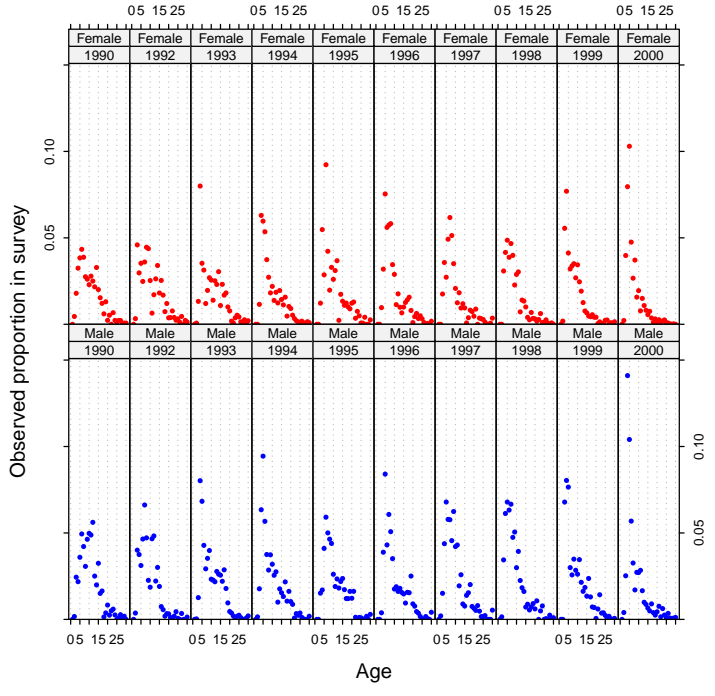
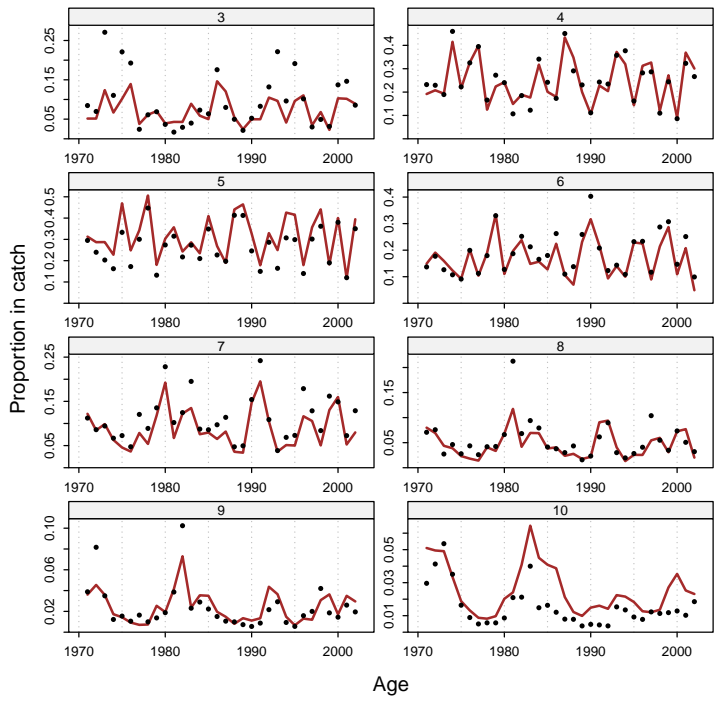
A general introduction to the **scape** and **plotMCMC** packages is in the vignette `R goes fishing`.

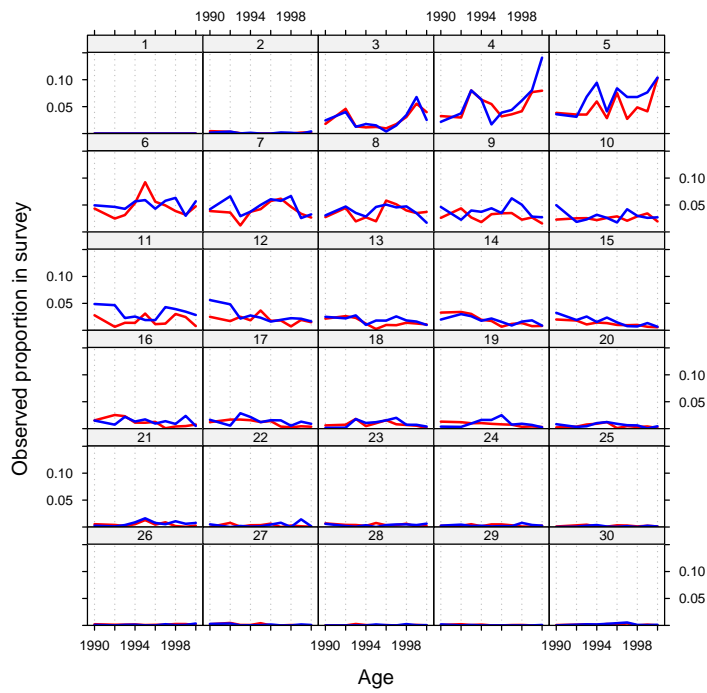
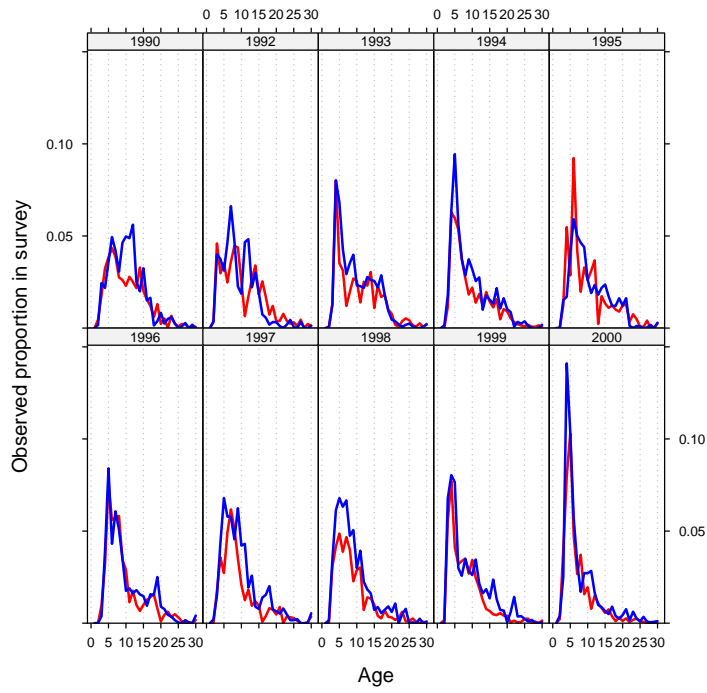
2 plotB



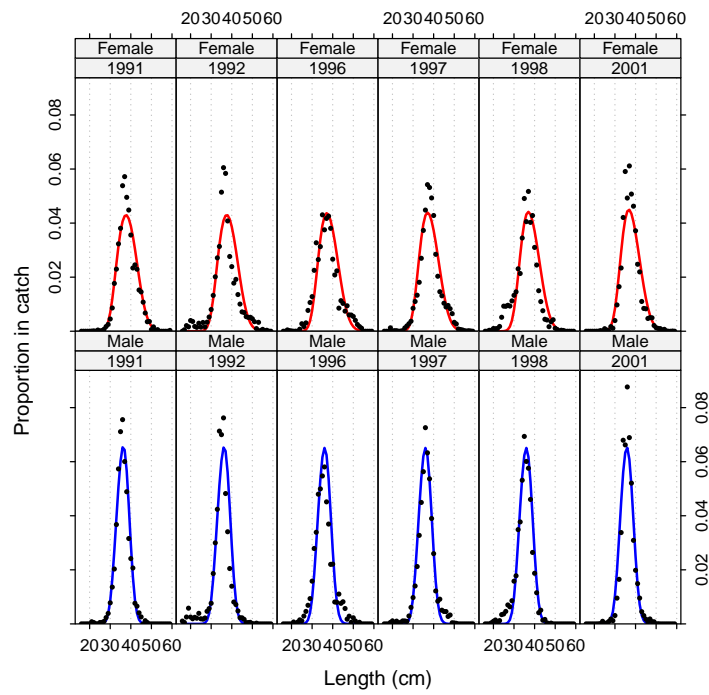
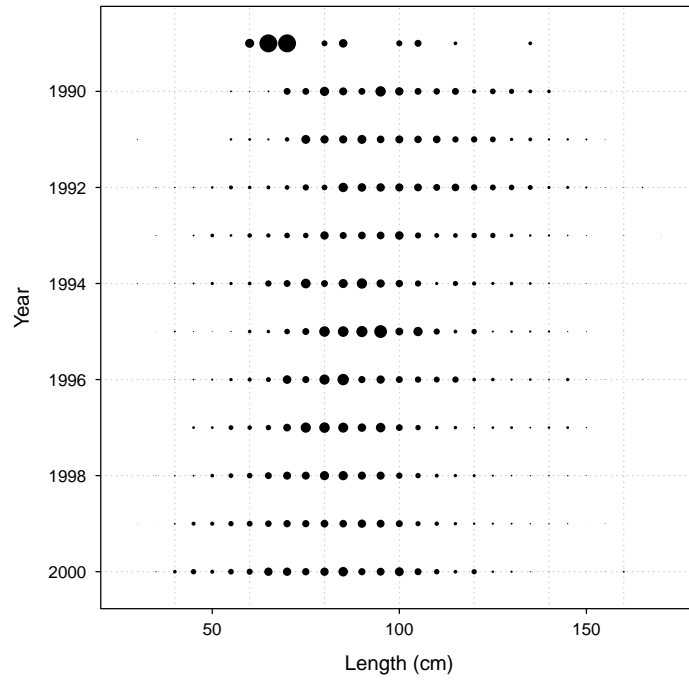
3 plotCA

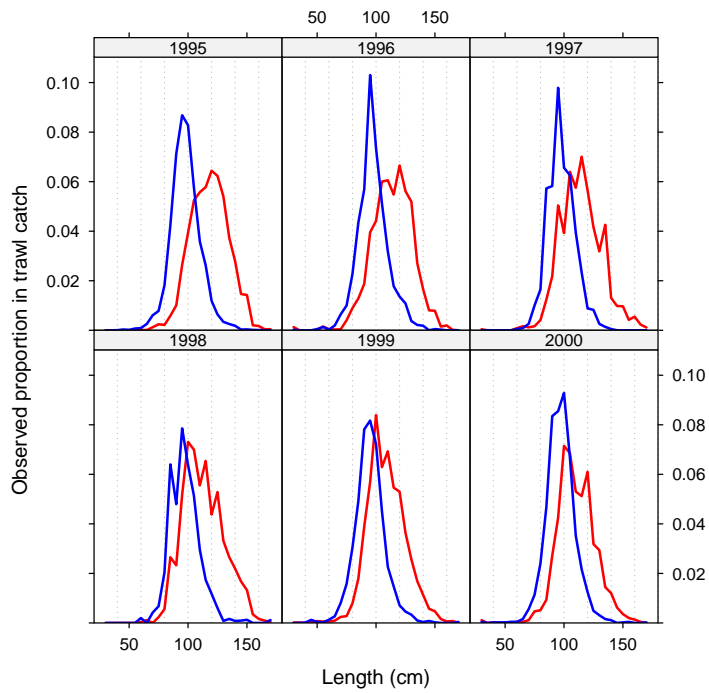
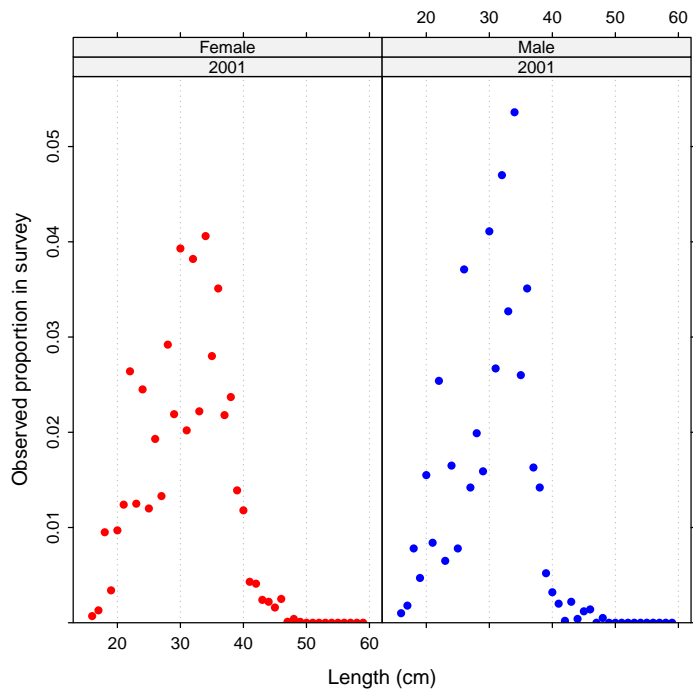


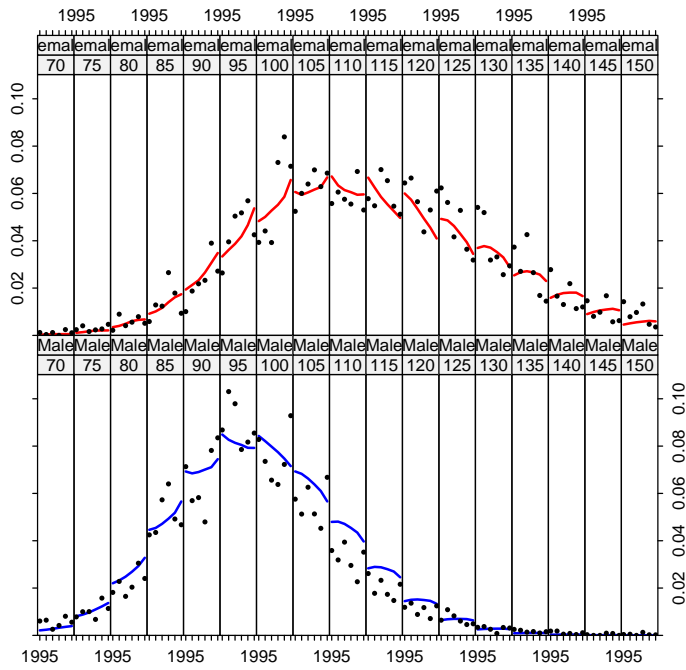




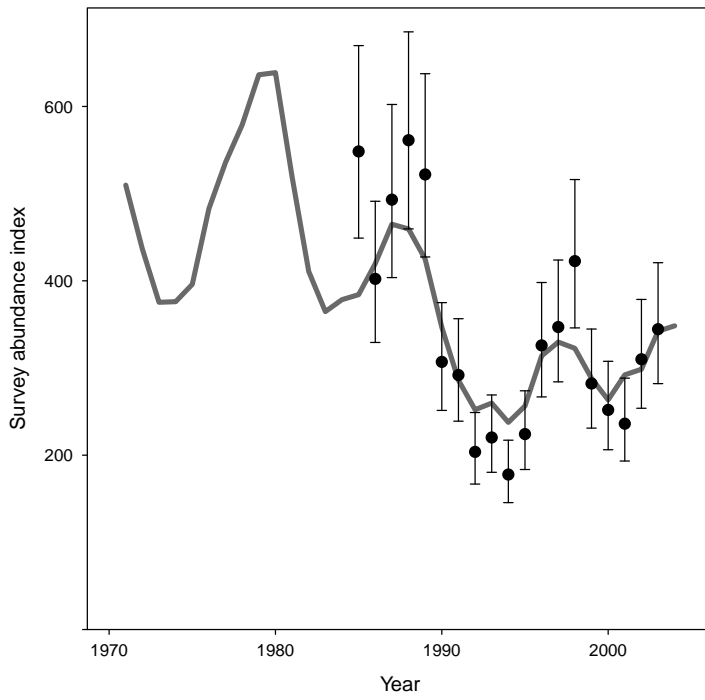
4 plotCL

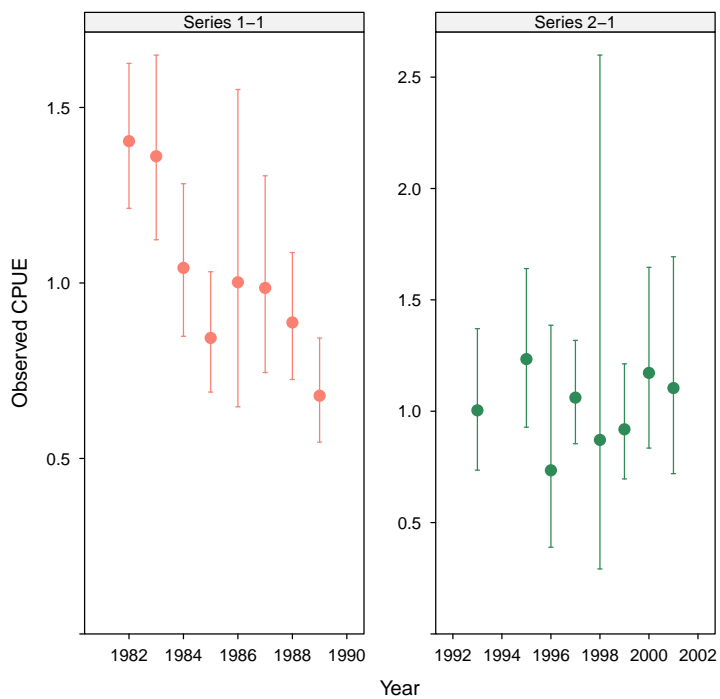
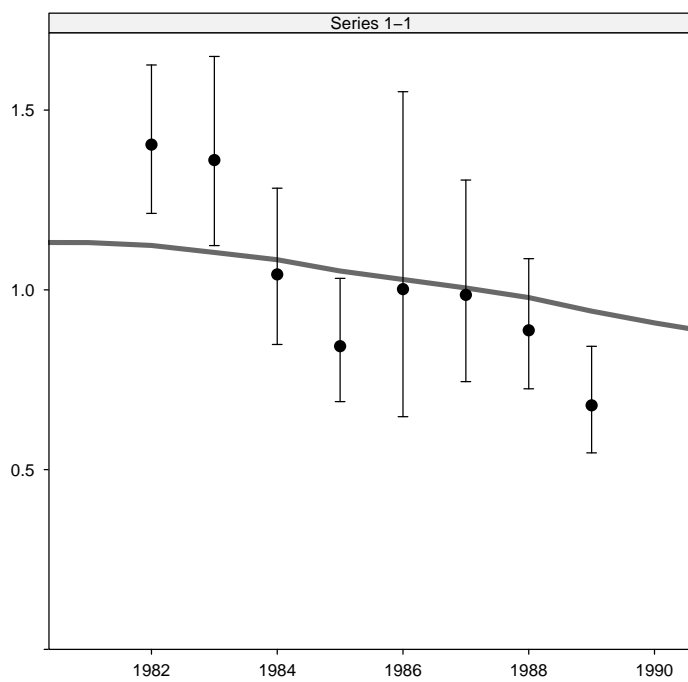




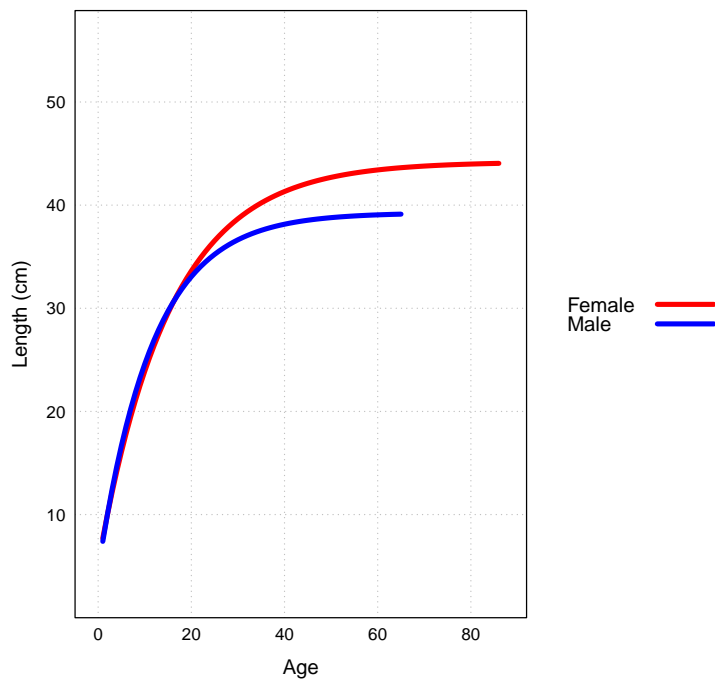
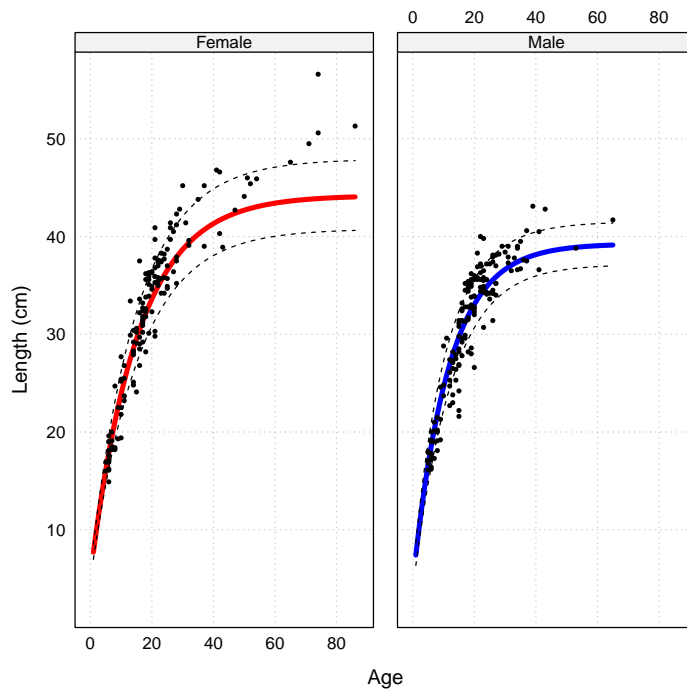


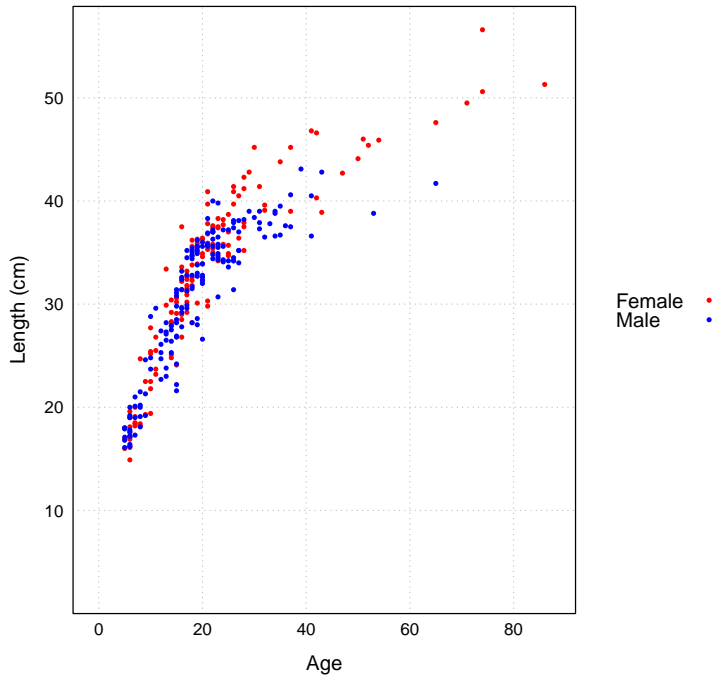
5 plotIndex



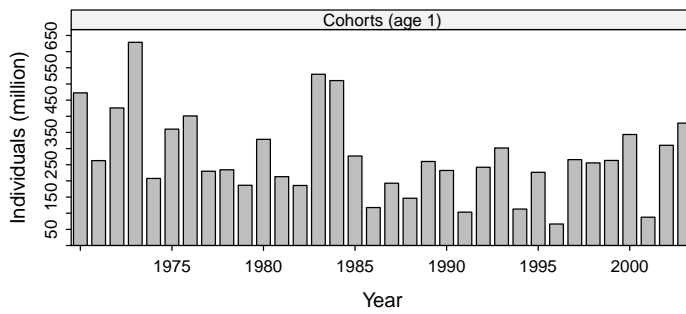
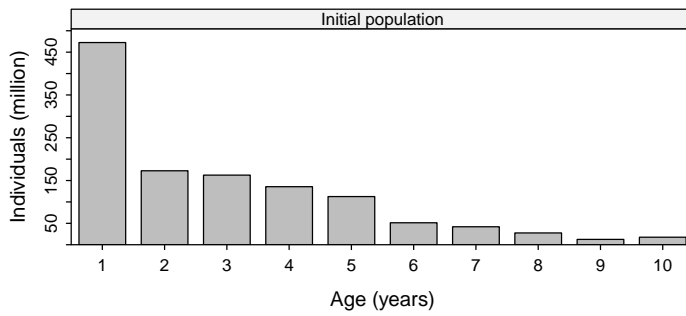


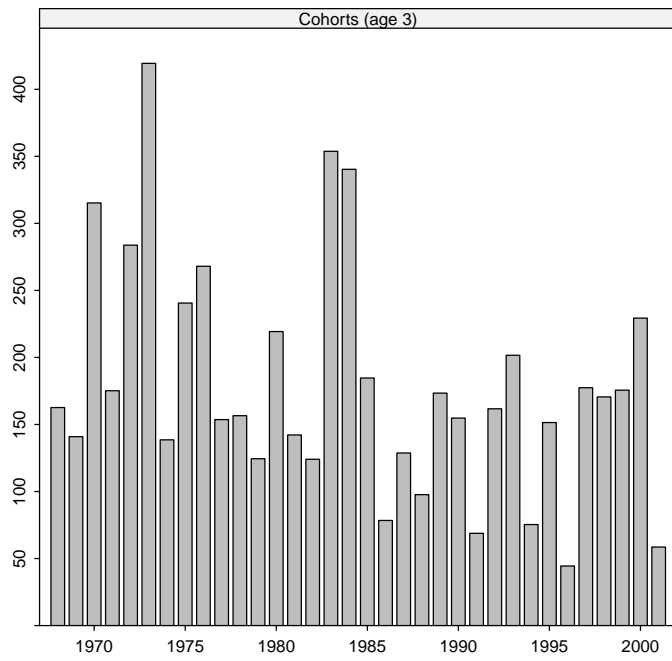
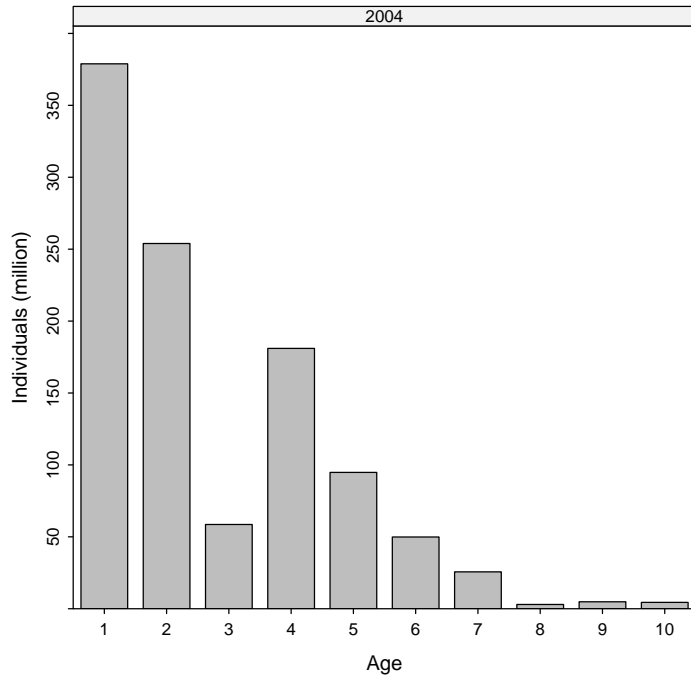
6 plotLA

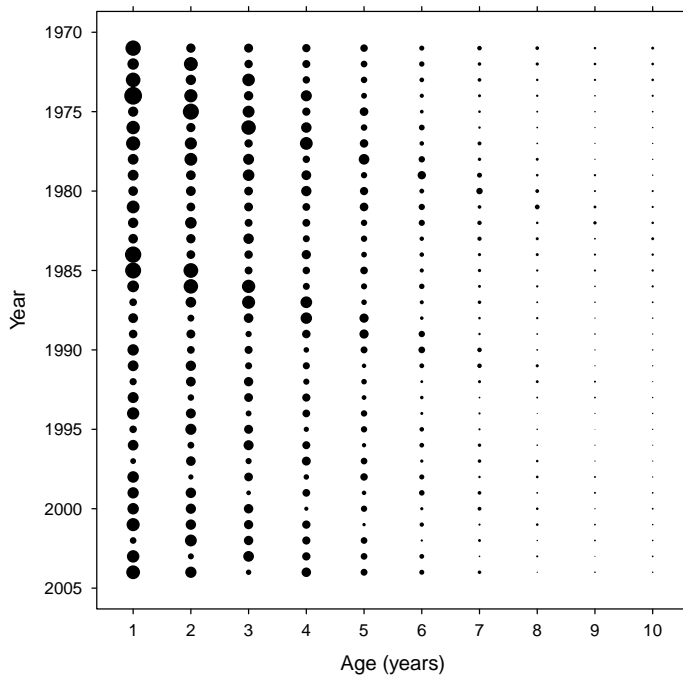
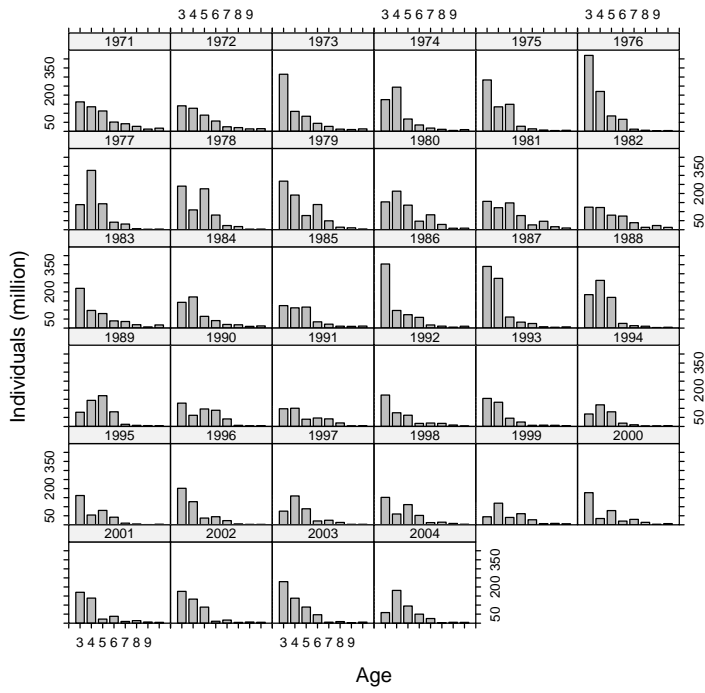




7 plotN







8 plotSel

